



# 2025 ANNUAL REPORT



# LETTERS FROM THE DIRECTORS



## Peter Lalampaa

EXECUTIVE DIRECTOR

The past year was marked by growth and resilience, despite widespread budget cuts across the conservation sector. Thanks to your steadfast support, we not only sustained our work, but we also strengthened it.

In a time of global uncertainty, our partners walked alongside us in advancing Grevy's zebra conservation and creating lasting impact. We proudly celebrate our 2025 achievements and extend our heartfelt gratitude to our donors, partners, government, and the communities at the heart of our work.

Last year reflected the dedication and passion of our team. From enhancing how we communicate the intersection of storytelling and science, to strengthening field data monitoring through smart technology, we invested in systems that make our conservation efforts more effective and long lasting. When funding withdrawals left gaps in community conservancies, we stepped forward. Through careful quarterly planning, clear prioritization, and strategic resource reallocation, we ensured that critical conservation actions continued without interruption.

With your support, we also amplified our voice on global platforms, including New York Climate Week and the Wildlife Conservation Network Spring and Fall Expos, reinforcing the importance of locally-led conservation.

Our field teams covered over 65,000 kilometres, enabling us to understand where Grevy's zebra access vital resources such as water and pasture. Every intervention we undertook was grounded in science and driven by community partnership.

Our plans are underway to cover new areas that are used by Grevy's zebra. One such area is collaboration with Laikipia private landowners and community conservancies. Positioning ourselves at the forefront of this new partnership is a challenge we are committed to taking on in order to support the continued growth and survival of Grevy's zebra.

Thank you for standing with us. Together, we are securing a future for Grevy's zebra.



## David Kimiti

DIRECTOR OF RESEARCH AND IMPACT

While the last few years have largely been about rebounding and recovery from a devastating drought, 2025 has been a year of confidence, momentum, and measurable growth for Grevy's Zebra Trust. Across our core landscapes, we have recorded encouragingly strong foal and juvenile-to-adult ratios, a clear signal that the Grevy's zebra population within our areas of operation is not only stabilizing but thriving. Provided climatic conditions remain favourable, these demographic trends provide a solid foundation for the population to continue its upward trajectory. For a rare and endangered species, this represents a powerful reminder that sustained, community-led conservation works.

This year, our footprint expanded meaningfully across our area of operations. In Isiolo, our newest program was fully established, identifying threats, formalizing partnerships, and conducting quarterly joint patrols with local conservancies and government partners. These patrols have strengthened anti-poaching monitoring, improved information availability, and reinforced collaborative management across a landscape that is vital to Grevy's zebra movement and survival. At the same time, our Rangelands Program has continued to deepen its impact. Training and engagement have been successfully expanded into Ol Donyiro, Nasuulu, and Nakuprat-Gotu, where communities are learning how to incorporate Holistic Land and Livestock Management principles to restore grasslands and build resilience

to drought. We also launched our Connected Landscapes initiative in Laikipia County, marking an important step toward securing ecological corridors that link fragmented habitats.

Across all regions, our Research and Impact team has focused on strengthening evidence-based decision-making. From improved demographic monitoring and spatial analysis to closer integration between field data and management actions, we have worked to ensure that information gathered by our monitoring teams and partners directly informs interventions such as water provision, habitat management, and dry-season planning. The result is a greater connection between science and practice, enhancing both efficiency and impact.

None of this progress would be possible without the leadership and commitment of local communities. Women's groups restoring grasslands, youth participating in monitoring and patrols, and conservancy partners coordinating joint action all demonstrate that conservation success is rooted in indigenous ownership. In 2025, we have not only strengthened indicators for Grevy's zebra populations but also deepened the social foundations that make long-term recovery possible.

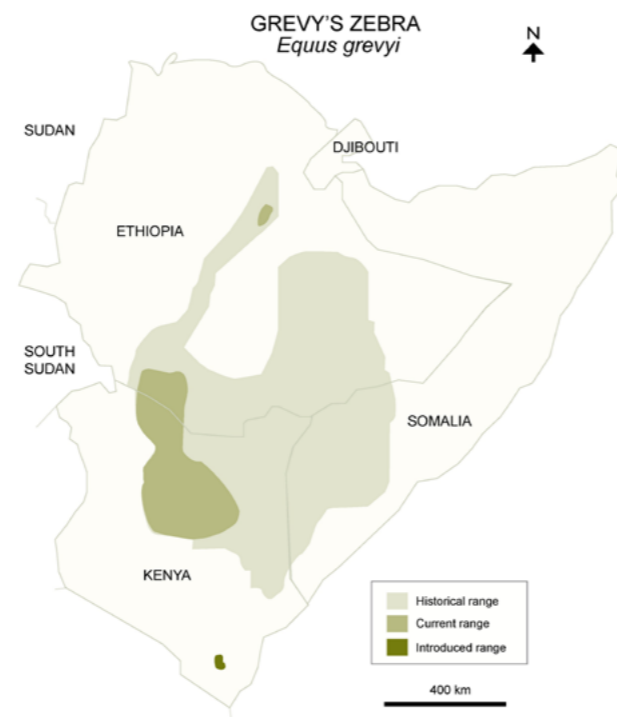
As we look ahead, our priority is clear: build on these gains, maintain rigorous monitoring, and continue investing in the partnerships that build resilient landscapes. The progress we celebrate this year is not an endpoint; it is a platform for creating long-lasting impact.

We thank you for your support as we continue on this journey.



# GREVY'S ZEBRA

Grevy's zebra (*Equus grevyi*) are the largest members of the equid family, recognised by their finely detailed stripes, large fuzzy ears, bright white belly, and the distinctive charcoal dorsal stripe framed by a white patch near the rump, which is a feature that gives rise to their Samburu name, "Loiborkurum", meaning "white-rumped". They occupy a unique ecological niche between the water-dependent plains zebra and the arid-adapted wild ass, making their home in the arid and semi-arid grasslands and shrublands of central and northern Kenya. They share these vast, open landscapes with pastoralist communities who keep livestock, and whose cultures and livelihoods are grounded in nature.



With approximately 3,000 Grevy's zebra remaining in the wild, the species is classified as endangered, facing ongoing pressure from habitat degradation and fragmentation, and competition for resources.



# OUR APPROACH

Communities are at the centre of designing and driving GZT's conservation efforts because we recognise that the survival of Grevy's zebra depends on their ability to coexist with people living in the same landscape. Both communities and wildlife face shared threats and our work seeks to better the future for both.

Over 93% of our team is employed from the communities sharing space and resources with Grevy's zebra. They have a deep knowledge of the landscape, and it is through their leadership that we have developed locally led and locally relevant solutions.

We recognise the critical role that the whole community has in conserving biodiversity, and we include all demographics (elders, women and warriors/youth) so that everyone's voice is heard in the co-creation of a better future.

Grevy's Zebra Trust (GZT) exists to conserve and grow the Grevy's zebra population in Kenya. We take a landscape approach to species conservation because solutions for Grevy's zebra must also be solutions for people.

# HIGHLIGHTS OF 2025



**2,743**

Grevy's Zebra Sightings



**33%**

Sightings were Foals and Juveniles



**65,212 km**

Kilometers Walked by Monitoring Teams



**42,297**

Hectares under Regenerative Grazing with 11,478 Cattle



**151.5 kg**

Grass Seeds Harvested from Restoration Sites



**KES 331,500**

(2,570 USD) Earned by Grassland Champion Women from Grass Seed Sales



**5,770**

Women and Girls Received Nkirreten Dignity Packs



Hosting of The International Wild Equid Conference



# VALUING GREVY'S ZEBRA



Ownership of Grevy's zebra conservation is embedded within indigenous and local communities.



## Nkirreten

### Dignity Packs made by Samburu women for Samburu women and girls

Launched in 2018, this initiative provides women and girls with safe and reusable sanitary pads. Four pads make up a Dignity Pack, which features a distinctive zebra-striped design to reinforce the link between Grevy's zebra conservation and community well-being. Beyond the distribution of Dignity Packs, the Nkirreten project creates spaces for building community, fostering relationships, and strengthening women's voices. Through the platform of the *loip* (a traditional women's meeting), women gather to discuss health, share knowledge, and support one another, while the Dignity Packs themselves empower women and schoolgirls by helping them manage menstruation with dignity and reducing their exposure to social challenges. The project demonstrates that conservation is most effective when it acknowledges and responds to the realities of the community.



Dignity Packs produced	9,323
Dignity packs distributed	6,739
Primary schools reached	22
Secondary schools reached	2
Number of <i>loip</i> meetings	10
Percentage given to schoolgirls	49%
Percentage given to community women	51%

# The *Loip* That Stopped for a Birth: Why Conservation Must Serve Both Wildlife and People

During a *loip*, women were deeply engaged in a discussion about women's health when an elder arrived and requested two women to join him. The two women returned shortly with news: a woman from their village had been out herding goats and had gone into labour. She had managed to walk back, but now needed assistance. The two women who had first responded were not experienced in childbirth, so they returned to the *loip* to ask two older women who were expert midwives.

The *loip* participants were distracted with concern for the woman in labour, wanting to know if she was safe. Damaris stopped the meeting and went to the house. The woman had not yet given birth, and the midwives were assisting her through the process. Then Damaris heard it—the cry of a newborn baby. Everyone was relieved and happy, but immediately asked,

“  
What's next?”



The midwives insisted that the mother needed to go to the clinic to ensure she was well. The woman was extremely weak. Not only had she just given birth, but she had been in labour while herding the goats far from the village and had only realised her condition when labour was advanced, forcing her to walk the entire distance back. The GZT vehicle was already at the village for a planned distribution of Dignity Packs, so the team covered the seats with a tarp to transport her. However, they first needed permission from her husband, who was out checking on the goats she had left behind. Someone fetched him, and he returned to give his consent.

The zebra-striped reusable sanitary pads from the Nkirreten project were used to help manage bleeding during transport. At the clinic, a nurse was present and the woman was given IV fluids to help her regain her strength. Once she was settled, Damaris and the driver returned to resume the *loip* and continue the original discussion—women's health. The topic now felt intensely real and practical rather than theoretical. The women discussed what needs to be done when a woman gives birth, highlighting the value of combining traditional practices (the midwives who helped with delivery) and modern medicine (taking her to the clinic afterwards when she was weak).

The women in the *loip* credited GZT with genuinely helping the situation, saying,

“  
If there was no conservation, there wouldn't have been a vehicle to transport her to the clinic.”

This type of intervention, although not directly conservation-related, increases the community's value of conservation. Following this, the team was able to distribute the Dignity Packs to the women as originally planned.

As conservationists, GZT must focus on conservation goals while also acknowledging and responding to the realities of the community. The organisation has resources such as vehicles and educated staff like Damaris who understood that the woman needed to reach the clinic. This incident demonstrates the importance of being part of the community in ways that build trust and value for conservation work.



## Scholarships

This year marked a milestone for GZT's scholarship students. Grace Leruso, mentored by Damaris, completed her secondary school education, finishing well after navigating some challenges along the way, a result that brought great excitement to the whole team. Grace's completion marks the close of a previous cohort of scholarship recipients. The second recipient, Isaac Lenanyie, is currently undertaking a course at the Wildlife Research and Training Institute (WRTI), where he is doing very well, engaging in both practical and academic learning and progressing well in his studies.

While donor-funded scholarships have come to a close, the community has taken inspiration from those earlier programs to establish something of their own.

In the words of Ngeeti Lempate (also known as Mama Grevy),

“

We have been able to produce grass seed from our restoration site and, in 2025 we were able to make almost \$2,500 from the sale of grass seed. Inspired by donors who had previously created scholarship programs, from the restoration site grass sales, we as the Grassland Champions have supported children in our community to attend school.”



## Women's Outreach Program Launch

In Samburu culture, women have long held a traditional role as caretakers of the environment and wildlife, a foundation that is reflected in every aspect of GZT's work, where women are not only involved in but often leading initiatives across the organisation. This year, we launched the Women's Outreach Program, bringing together all of our women-focused initiatives, including Grassland Champions, Grevy's Zebra Scouts, and the Nkirreten project, into a single team dedicated to educating others about Grevy's zebra, conservation, and the connection between the species' conservation and community wellbeing. To support the program, a vehicle specifically dedicated to the Women's Outreach Program was generously donated by Kevin Beckmann.



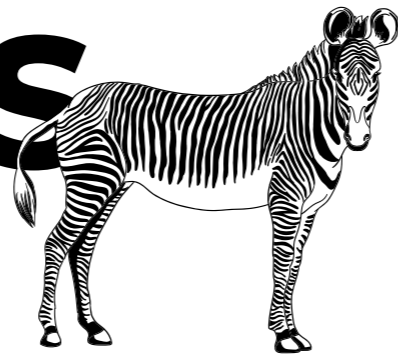
© NATALIA MROZ

© DAVID KIMITI

© KELSEY KURTIS



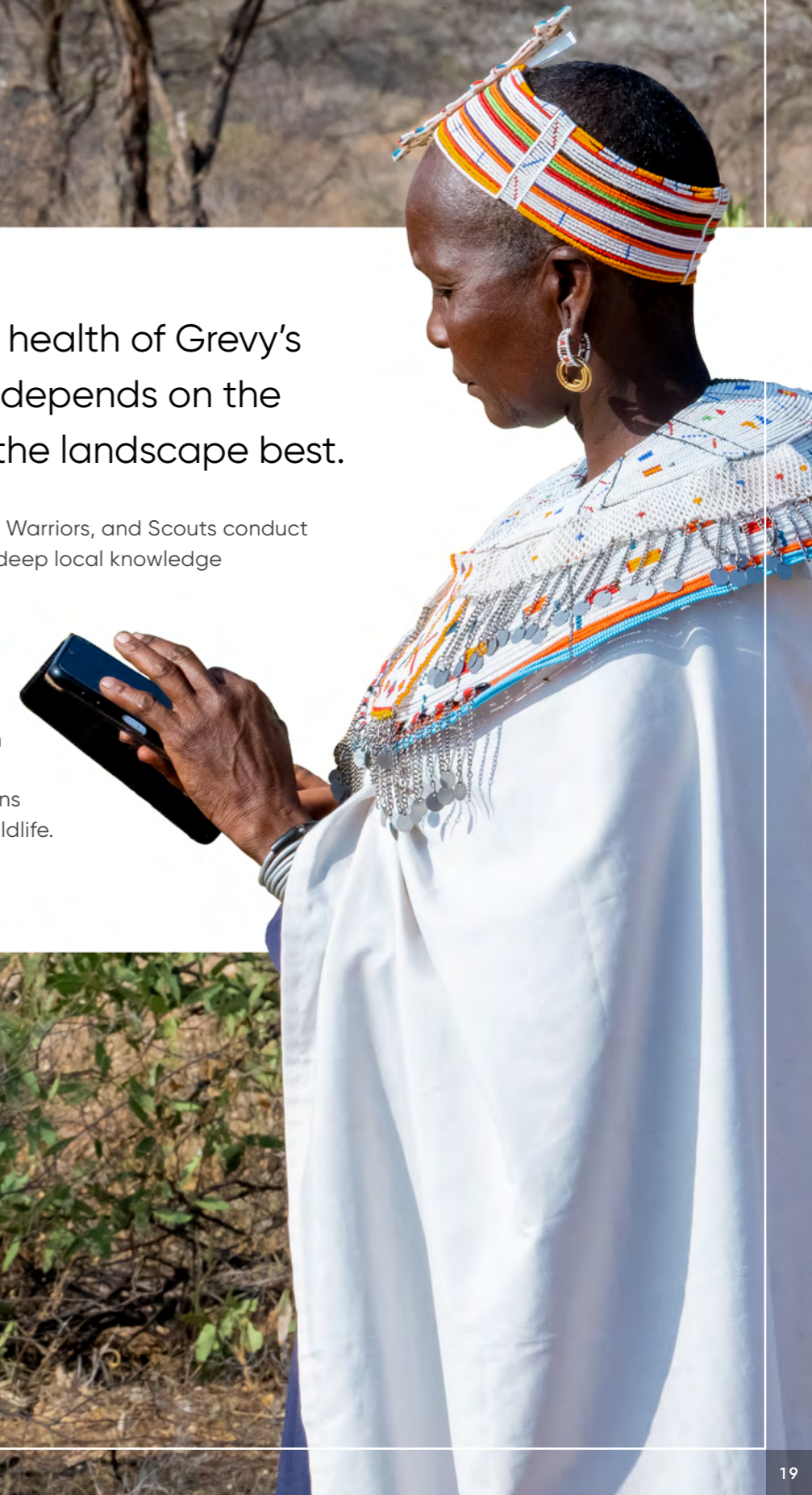
# UNDERSTANDING GREVY'S ZEBRA



Action is informed by accurate information on Grevy's zebra populations.

Understanding the health of Grevy's zebra populations depends on the people who know the landscape best.

Our Grevy's Zebra Ambassadors, Warriors, and Scouts conduct regular patrols, combining their deep local knowledge with the Spatial Monitoring and Report Tool (SMART) app to record Grevy's zebra sightings and track population health. Their work extends beyond data collection, bringing conservation conversations into their communities, including discussions around sharing resources with wildlife.





Metric	Grevy's Zebra Ambassadors	Grevy's Zebra Scouts	Grevy's Zebra Warriors	Joint Patrols & Surveys
No. of team members	18	26	10	-
No. km walked/driven	23,412	29,394	11,815	9,583
No. Grevy's zebra sightings	4,370	14,344	1,221	2,844
No. Grevy's zebra encounters	546	1,329	114	310
Average group size	5	7	4	8
Foal/juvenile adult ratio	40%	32%	37%	26%
Sex ratio (M:F)	1:2.5	1:1	1:1	1:1

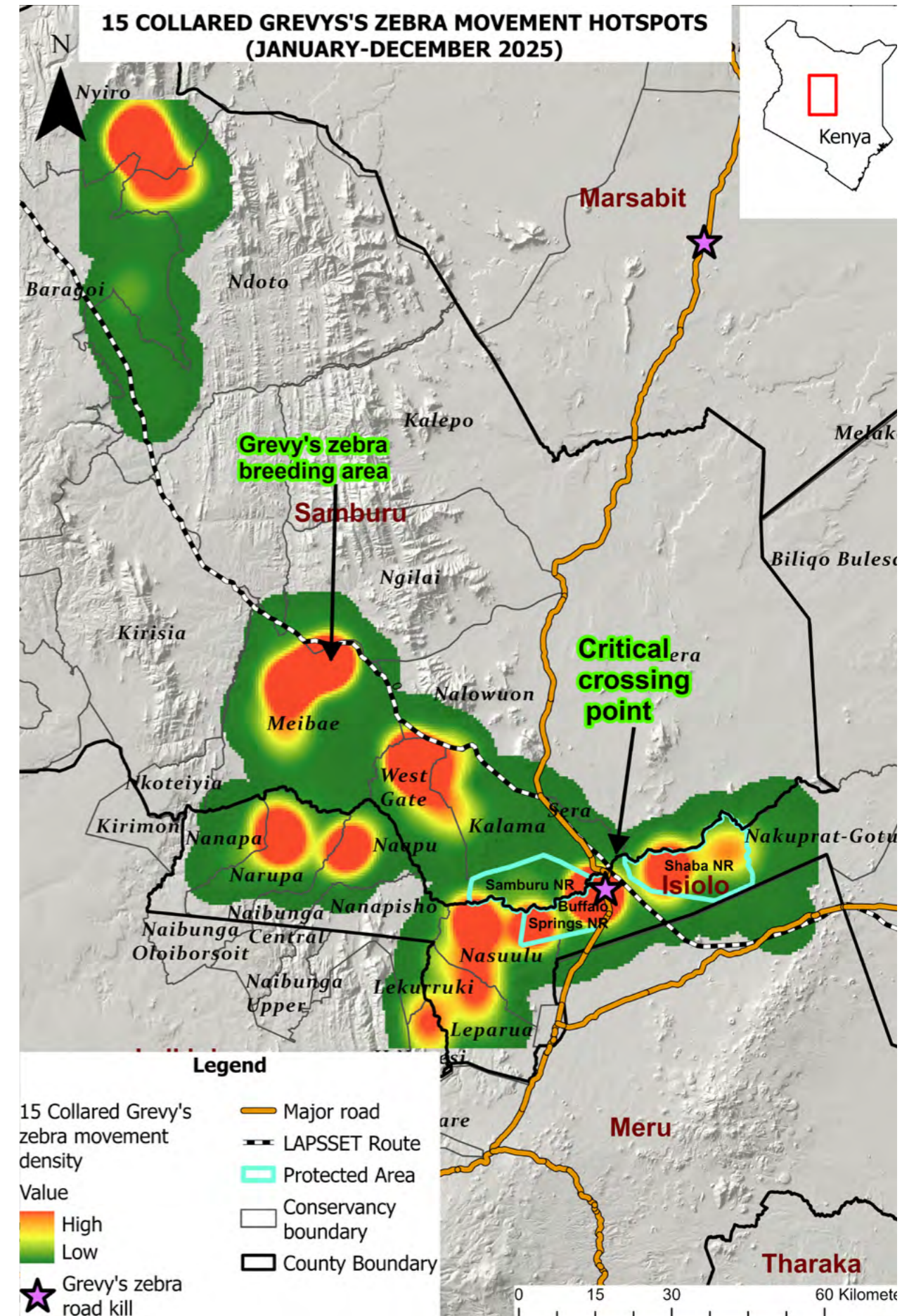
## Collared Grevy's Zebra Movement

In partnership with the Kenya Wildlife Service (KWS), WRTI, and Marwell Wildlife, GZT collared 20 Grevy's zebra in northern Kenya in September 2023. Tracking data has helped us monitor the collared Grevy's zebras' interactions with linear infrastructure projects including the proposed Lamu Port South Sudan Ethiopia Transport (LAPSSET) Corridor.

Tracking offers insights not only into Grevy's zebra movement but also into broader ecosystem dynamics involving people, livestock, and other wildlife. In addition to collaring, we conducted ground tracking to monitor habitat condition, Grevy's zebra health and social structure. Over 300 Grevy's zebra were monitored during each ground tracking exercise where the average body condition score was four out of five throughout the year.

Results from 2025 showed that Grevy's zebra spent the majority of their time in community and county conservancies (80.5% of GPS locations) and the rest of their time in protected areas with hotspots in Buffalo Springs and Shaba National Reserves in Isiolo County.

Grevy's zebra movement patterns were largely driven by pasture availability and quality, with Grevy's zebra utilising denser habitats during the dry season in search of forage. Overall, land cover across surveyed areas remained in good condition, with adequate forage availability and sustainable use levels.



# SUPPORTING GREVY'S ZEBRA SURVIVAL



Immediate threats to Grevy's zebra are mitigated.



## Peace Building

The El Barta region has long been characterised by inter-community tensions between the Turkana and Samburu, driven by cattle rustling, competition for scarce resources, and, in the early part of 2025, political incitement and land ownership disputes. These dynamics escalated into violent conflict in the second quarter, resulting in the loss of lives and property, and triggering cycles of revenge that destabilised operations across the region.

Against this backdrop, peace building remained one of the most critical and consistent areas of GZT's work throughout 2025, with the team adapting its approaches in real time to meet the realities on the ground. A central principle guiding this work has been the recognition that conventional "boardroom" peace meetings, which often exclude those most directly affected by conflict, are insufficient. Instead, the focus has been on direct, field-based engagement with communities, and in particular with the *moran* (warriors), who are widely recognised as the primary actors in inter-community conflict dynamics. Equally central has been the involvement of the *Lmooli* (senior elders), who hold traditional authority and play a vital role in guiding and disciplining the *moran*. This intergenerational approach, working within indigenous systems of governance and conflict resolution, has been a defining feature of GZT's peace building model in El Barta, and has underpinned the meaningful progress made over the course of the year.

Peace is essential not only for the safety and livelihoods of pastoral communities, but also for the survival of wildlife in the El Barta landscape. Conflict and insecurity restrict the movement of both people and wildlife, leading to abandoned grazing zones, disrupted ecological balance, and the aggregation of livestock in concentrated areas, which in turn causes overgrazing and displacement of Grevy's zebra. When peace prevails, these areas become accessible again, allowing Grevy's zebra and other wildlife to expand their range and thrive in healthier habitats.



## Kids' Peace Camp

Recognising that lasting peace must be built across generations, GZT held a Kids' Peace Camp, an experience that was both inspiring and memorable. Throughout the camp, children came together to promote and practice peace, with community members expressing great joy at seeing

young people take on this role. A key outcome of the camp was empowering children to champion Grevy's zebra conservation and peace among their peers in their villages and schools, a role the children embraced with enthusiasm and commitment. During a friendship-making session, each child shared their parent's phone number with a new friend, creating connections between families that had not previously existed. This simple initiative opened the door for parents to communicate and build relationships with one another, laying a foundation for trust and peace that extends from individual families into the wider community.



## Grevy's Zebra Veterinary Interventions & Mortality

The North Kenya Vet Unit addressed 22 cases of Grevy's zebra injuries in 2025. This included one case of collar replacement in Baragoi, one case of de-snaring, two cases of foal rescue and 19 cases of treatment. Treatment cases included a range of injuries from natural causes (wounds from predation and territorial fights), and human-related causes (wounds from spears and machetes).

County	Collar Replacement	Rescue	Treatment	Total
Isiolo	0	1	3	4
Laikipia	0	0	3	3
Marsabit	0	1	0	1
Meru (Lewa)	0	0	2	2
Samburu	1	0	11	12
<b>Total</b>	<b>1</b>	<b>2</b>	<b>19</b>	<b>22</b>



In 2025, we recorded 31 cases of Grevy's zebra mortality. Of these, 77% were attributed to natural causes, including predation, injuries, drowning, drought, disease, and birth complications, while 13% resulted from human-induced causes such as gunshot wounds and vehicle collisions. The causes of three cases, representing 10%, could not be determined. This marks a slight increase compared to previous years and was largely linked to delayed rainfall, which reduced pasture and water availability. In response, we implemented targeted veterinary interventions, strengthened rangeland restoration and planned grazing initiatives, and maintained continuous monitoring to enhance overall ecosystem resilience.



© NATALIA MROZ

# Isiolo Program

Reflections by Pascal Esekou, Isiolo Regional Coordinator

“

Isiolo is gradually transitioning into a conservation-focused landscape, with communities taking ownership of wildlife conservation. When GZT first began working in the area, engaging the local communities was particularly challenging. Most community members were unaware of the importance of conserving the iconic and endangered Grevy's zebra, and many expected direct monetary or employment benefits from conservation efforts.

Today, however, attitudes are changing. Communities that once resisted workshops and engagement initiatives are now actively requesting more conservation interventions on their land, recognizing the importance of protecting Grevy's zebra.



During a Village-Based Committee (VBC) meeting in December 2025, an elder from Gotu village, Mr. Billow made a statement that highlighted this positive shift:

“

Why are people killing innocent creatures like Grevy's zebra, which are harmless? They do not harm our livestock or eat our crops. All they do is provide beauty and serve as indicators of healthy rangelands, showing us where there is pasture, water, and peace.”

Such reflections demonstrate that conservation awareness is taking root in Isiolo, signaling a promising future for both the community and Grevy's zebra.





# REGENERATING RANGELANDS

Healthy rangelands support people, livestock, and wildlife.

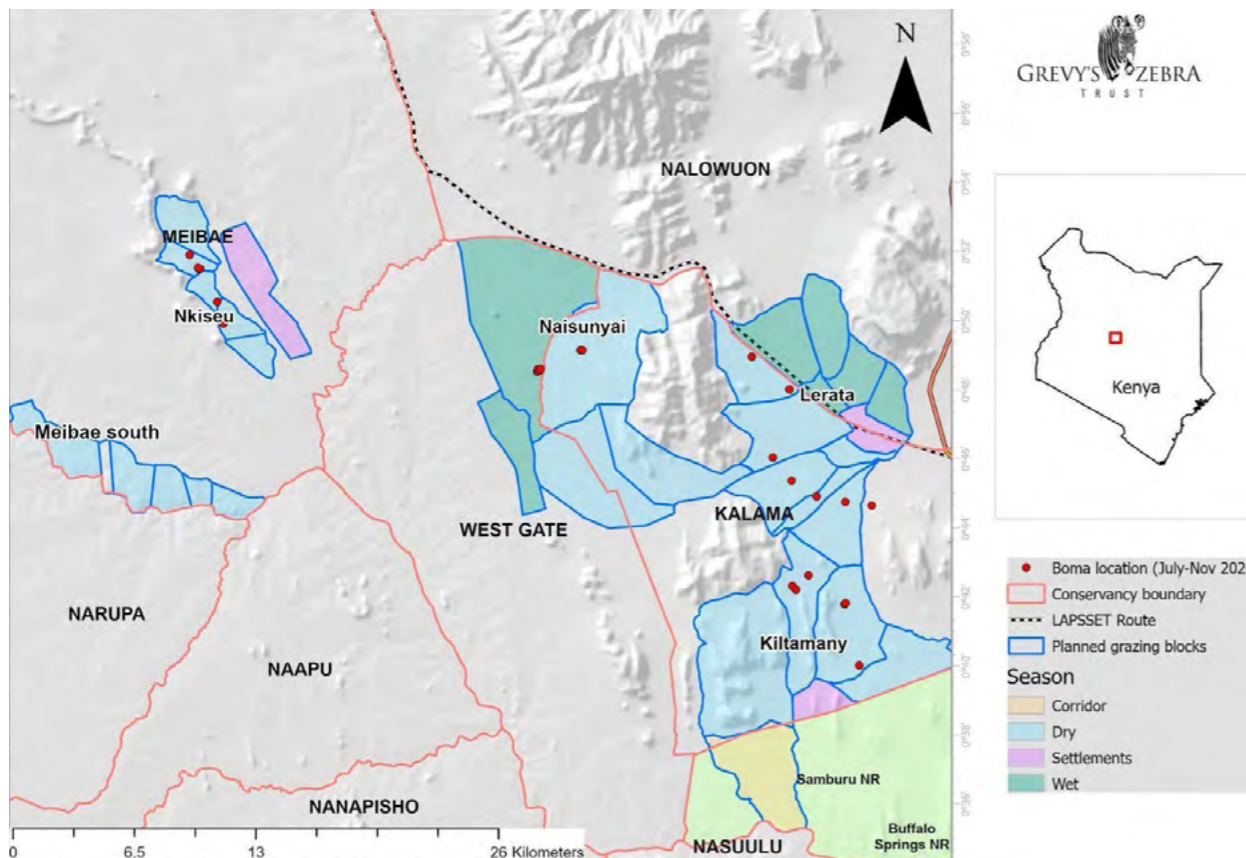
GZT's Rangelands Program continues to implement Holistic Land and Livestock Management, which is a community-driven holistic grazing approach, treating the land at the zonal level as one grazing unit with virtual grazing blocks. Herders use low-stress techniques to bunch and move livestock through grazing blocks for regenerative grazing. Strategically placed bomas (livestock sleeping enclosures) help recover bare ground by enriching the soil with livestock impact. Continuous monitoring allows for adaptive management of the grazing plan.

Our partner villages each elect a Village Based Committees (VBC), which is a small group of elders, women, youth and conservancy officials. They take forward grazing and land use plans as part of improving rangeland health around the village on a voluntary basis.

2025 marked a period of significant progress and resilience for GZT's Rangelands Program across Westgate, Kalama and Meibae partner conservancies. Despite inadequate and unevenly distributed rainfall throughout much of the year, communities remained strongly committed to regenerative grazing, yielding tangible benefits for both wildlife and pastoral livelihoods.

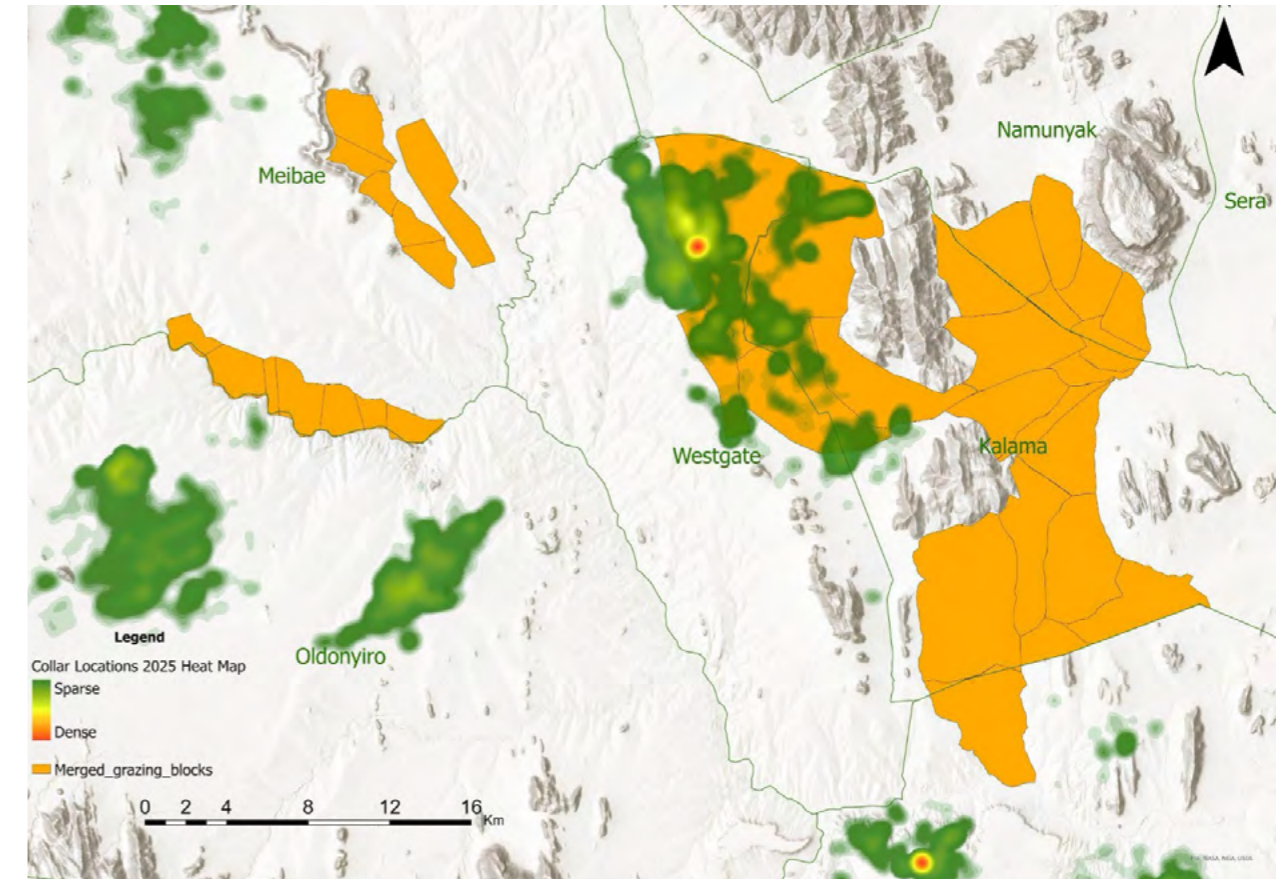
# Regenerative Grazing

Throughout the year, a total of 11,478 cattle were managed under bunching exercises. The stark contrast in rangeland condition between conservancies practising regenerative grazing and neighbouring areas highlighted the effectiveness of community-led management, with notable pasture abundance and planned utilisation observed even as surrounding areas experienced forage depletion. Since 2023, regenerative grazing has expanded by 30% covering an area of 42,297 ha during 2025.



Map showing seasonal grazing blocks and boma locations

In addition to more forage, increasing numbers of Grevy's zebra were seen utilising the areas under active restoration, a strong indicator that improved rangeland management is translating into tangible impact for Grevy's zebra. In particular, sightings within restoration sites on Westgate Conservancy demonstrate how improved grazing coordination, and community-led stewardship are enhancing forage availability and habitat quality. The presence of Grevy's zebra in these recovering grasslands not only reflects improved rangeland condition but also reinforces the close link between healthy rangelands, resilient pastoral livelihoods, and the long-term survival of this endangered species.



Map showing Grevy's zebra collar locations in 2025 in relation to existing grazing blocks and restoration sites



© NATALIA MROZ

## Regenerative Grazing Success in Meibae Conservancy

Despite challenging conditions, the Lpus zone of Meibae Conservancy successfully hosted over 900 cattle from within and beyond their village during the short dry season, and still had grass cover remaining by the end. Mzee Lekulai, a board representative from Lpus zone of Meibae Conservancy, credits this success to teamwork and the technical assistance provided by GZT. With this support, elders are now leading forage assessments themselves, integrating calculations of forage availability and cattle carrying capacity into their grazing plans in a way that strengthens traditional knowledge. Building on this momentum, the community opened a portion of the dry season grazing reserve last wet season, and Mzee Lekulai was pleased with how well the area had recovered. Despite families rebuilding their herds after significant drought losses, coordinated grazing management continues to build momentum for healthy rangeland and a better quality of life for the community.

“

I am personally glad to witness the progress both the conservancy and my village have made in grazing planning. Last season was the best I've seen so far. We had proper coordination of cattle movement and made the most of the limited forage available during the below-average rains. I thank all the board members who supported the process during both quarterly and special meetings. Special thanks also go to our partner, Grevy's Zebra Trust, for providing vital technical assistance. We can now sketch out grazing blocks, estimate forage availability per block, and calculate how many cows can graze there and for how many days. Best of all, these assessments are led by the elders themselves.

“The grass was so tall, the cows looked like goats in a forest. We are making real progress as a conservancy, and we must keep going.” – Mzee Lekulai, Board Representative from Lpus zone of Meibae Conservancy



“

Coming from Naisunyai and having participated in the regenerative grazing for six cycles over the past three years, I have seen our cattle numbers increase through three calving seasons. Personally, I have been able to stay closer to home and enjoy peace.

Even after the close of the dry season, the rains were inadequate and land recovery was minimal. As a result, we moved out of the dry season grazing block and settled closer to the manyattas, remaining together throughout the quarter. This was a deliberate decision; we understood what lay ahead if the rain failed, we knew the importance of allowing our land to recover and most importantly, we had become one big family that did not want to separate.

We hope that 2026 will bring the same happiness, with more reliable rains.”

– Lelesara, Moran Council Leader



During the Westgate Conservancy end of year closing meeting, GZT was recognised, alongside other partners, for its contributions to rangelands management achievements within Westgate Community Conservancy in 2025.

Partnerships with community conservancies remain central to GZT's work, as conservancies serve as a critical foundation for the collaborative management of the landscapes and resources upon which Grevy's zebra depend.

## Land Restoration

“

My name is Naamaita Lebayo, a VBC member from Sukuroi village. I am proud to be one of the women pioneers behind the restoration of a once-barren 16-hectare grass plot. Alongside my peers, we dug semicircular bunds to control water run-off and reseeded the land with perennial grasses. Slowly, the land began to recover, and life returned. For us, the joy was always in the little things, knowing that in our own small ways, we were doing something to control the growing land degradation in our village. At the time, I didn't realize that these efforts would one day directly help my own household.

Like many pastoralists in Northern Kenya, my family suffered great losses during the 2022 drought. We lost most of our cattle. Only one cow survived, Toyie, my beloved and cherished companion.

After the rains, Toyie unfortunately broke her leg, and she had a young calf barely two months old. It was a difficult time. Toyie was in pain, struggling to survive while also caring for her calf and still providing milk for my family. To do all this, she needed both pasture and water. We introduced Toyie to the restored grass plot, lush with grasses that had grown back. For the past six dry months, Toyie has depended entirely on that plot.

My two sons, Leraha and Sapti, who would come to the site every day, became curious about the restoration process and even assisted me as I dug circular bunds.”

Over this time, Toyie's leg healed, she regained her strength, resumed producing milk, and her calf grew strong and healthy.

One evening, I was at the restoration site with other women, working to expand the area, when my two sons came to drive Toyie home. As I watched them lead her back, my heart was full. If there is something I am truly grateful to God for,' I said, 'it's the second chance He gave to Toyie.' Seeing my sons drive her home fills me with joy; it reminds me that they are part of a community that values livestock and land. Just imagine, my own efforts helped save her. I will continue this work and inspire others in the community to join us.”



## Key Study on Value of Grasslands

In collaboration with the Conservation Strategy Fund and through funding from the Dry Creek Foundation, GZT commissioned a study on the economic value of grasslands in our area of operations in 2024. The report shows the potential economic impact of restoration investments in our region, providing crucial information for infrastructure development efforts looking to implement restoration or biodiversity offsets. A key highlight from the report was the finding that while both semicircular bunds and regenerative grazing have the potential to provide a high return on investment (ROI), the magnitude of this ROI for regenerative grazing is exponentially higher (21,000% versus 112%) due to the relatively low implementation costs per hectare. This further underscores the importance of our regenerative grazing program for scalability and ecological and economic sustainability.



# CONNECTING LANDSCAPES

Community and Grevy's zebra needs are integrated into land use planning.

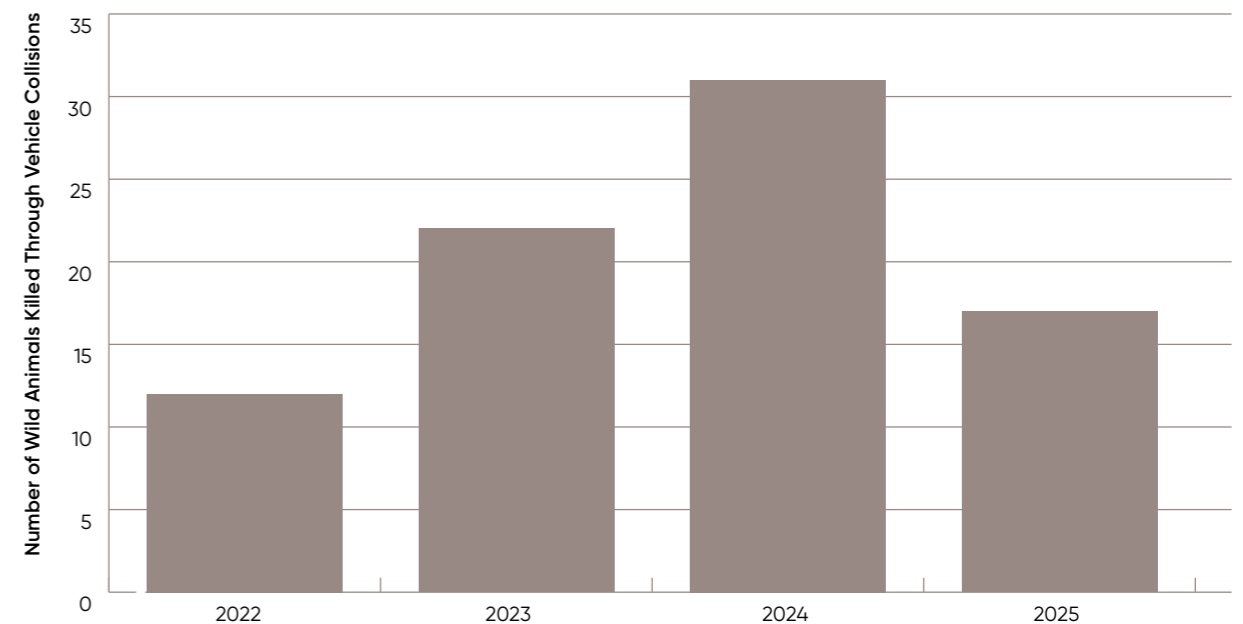
The Connected Landscapes Program is GZT's strategic initiative to secure and restore wildlife and livestock corridors across northern Kenya in response to increasing habitat fragmentation, infrastructure expansion, and climate pressures. By combining data, citizen science and advocacy, the program works to ensure safe, functional connectivity for Grevy's zebra across Marsabit, Samburu, Isiolo, and Laikipia counties.

## A2 Highway Vehicle-Wildlife Collisions

Critical crossing points across the A2 Highway are located within known corridors used by Grevy's zebra and other wildlife to access grazing and water resources. Crossing events occur more frequently during the dry season as water availability declines, usually between early evening and early morning. With no mitigation in place to slow down motorists, and reduced visibility due to time of day, the risk of collision between wildlife and vehicles is high.

The Northern Kenya Road Watch (a collaboration of local partners) continued to work with the Kenya National Highways Authority (KeNHA) throughout 2025 to advance signage and road modifications at wildlife collision hotspots along the A2 highway. Final sign designs were shared with the relevant KeNHA office and installation of signs is planned for early 2026.

The urgency of this work is reflected in records from the Northern Kenya Road Watch, which documented 17 vehicle wildlife collisions along the Isiolo-Marsabit A2 highway during the year, including two Grevy's zebra, reinforcing the need for targeted mitigation measures at critical crossing points. Other affected wild animals include two black backed Jackals, two white tailed mongoose, common genet, cape hare, leopard, lesser kudu, striped hyena, spotted hyena, red spitting cobra, puff adder, hedge hog and unidentified snake species.



Highway avoidance behaviour by Grevy's zebra was observed along the critical Samburu-Shaba crossing point, and crossing points between Meibae and Ngilai Conservancies, which is a key breeding site. Mitigation of the threat posed by this type of linear infrastructure is critical as it poses a barrier for Grevy's zebra movement and access to critical resources, especially for lactating females and foals. In order for signage to be effective in the long term, it needs to be coupled with rumble strips/speed bumps and night-time dynamic signage which gives location and time-specific information to road users.

## GZT Launches New Partnership with Wyss Academy

In November 2025, GZT formalised a strategic partnership with Wyss Academy for Nature to jointly advance our Connected Landscapes Program.

This three-year collaboration focuses on sustaining pasture availability and enhancing landscape connectivity in Naibunga and Ol Donyiro Community Conservancies.

The partnership looks to leverage GZT's expertise in rangeland restoration, VBCs, and women-led Grassland Champions with the Wyss Academy's systems approach to governance, innovation, and adaptive management. Together, we are co-designing and piloting evidence-led governance frameworks, strengthening corridor protection across Laikipia, Isiolo, and Samburu, and establishing a joint Monitoring, Evaluation and Learning platform. Our goal is to ensure that connectivity and pasture management interventions across Grevy's zebra range in Northern Kenya are community-owned, scientifically robust, and lead to tangible increases in Grevy's zebra population numbers.



# MORE FROM 2025

## Activities & Milestones



### IWEC

In 2025, GZT was proud to co-host the third International Wild Equid Conference (IWEC) in Nanyuki, alongside the IUCN/SSC Equid Specialist Group, bringing together scientists, managers, and wildlife professionals from over 20 countries to share knowledge and advances in wild equid conservation and management.



### Connecting with Partners

GZT's Executive Director Peter Lalampaa travelled to the United States, visiting several of GZT's valued partners and participating in important events.

During NatGeo's Explorers Week, he joined conservation leaders from around the world to exchange ideas on the shared mission to protect wildlife and ecosystems globally, while bringing attention to the unique challenges and successes of Grevy's zebra conservation in Northern Kenya.

He shared that conservation is a climate solution, highlighting how GZT's work extends beyond species protection to strengthening ecosystem health, enhancing resilience, and supporting local communities to adapt to climate impacts. His advocacy during the week focused on the need to devolve climate financing to local communities, emphasising that community-led conservation plays a vital role in addressing climate change in areas most affected by it.

# ASHE OLENG

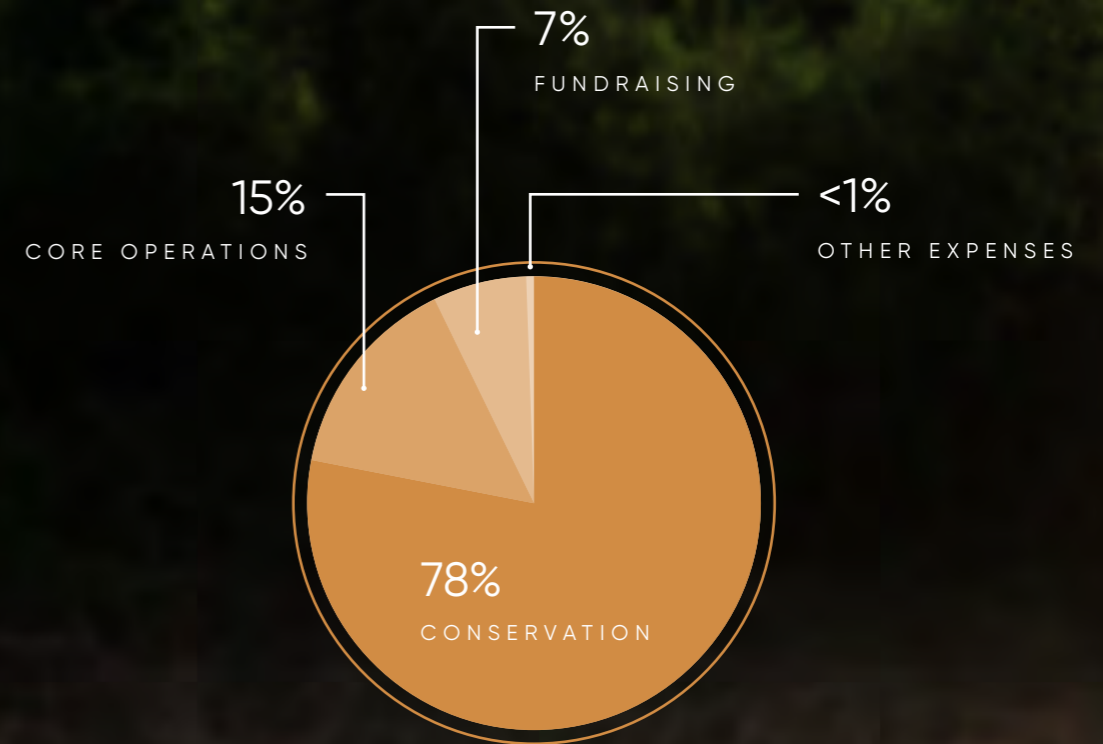
## Thank you for standing with us.

Your support has driven real progress for Grevy's zebra and the communities of northern Kenya who live alongside them. Every contribution has strengthened our team's ability to monitor populations, restore rangelands, and deepen the social foundations that make long-term conservation possible.

Together, we are seeing the results: foal and juvenile sightings rose to 33% of all Grevy's zebra encounters, a clear signal that the population is not only stabilising, but growing. In El Barta alone, that figure reached 40%. These numbers tell a story of resilience, and your generosity is what makes that story possible.

We are deeply grateful for your continued trust as we expand into new landscapes, strengthen community-led stewardship, and build the corridors that Grevy's zebra need to thrive. We are building a more hopeful and resilient future together.

## Our expenses in 2025



To see the full list of our incredible supporters and partners, please visit the Partners page on our website.





GREY'S ZEBRA  
TRUST

[www.grevyszebratrust.org](http://www.grevyszebratrust.org)

-  [www.facebook.com/grevyszebratrust](https://www.facebook.com/grevyszebratrust)
-  [www.instagram.com/grevyszebratrust](https://www.instagram.com/grevyszebratrust)
-  [www.youtube.com/channel/grevyszebratrust](https://www.youtube.com/channel/grevyszebratrust)

